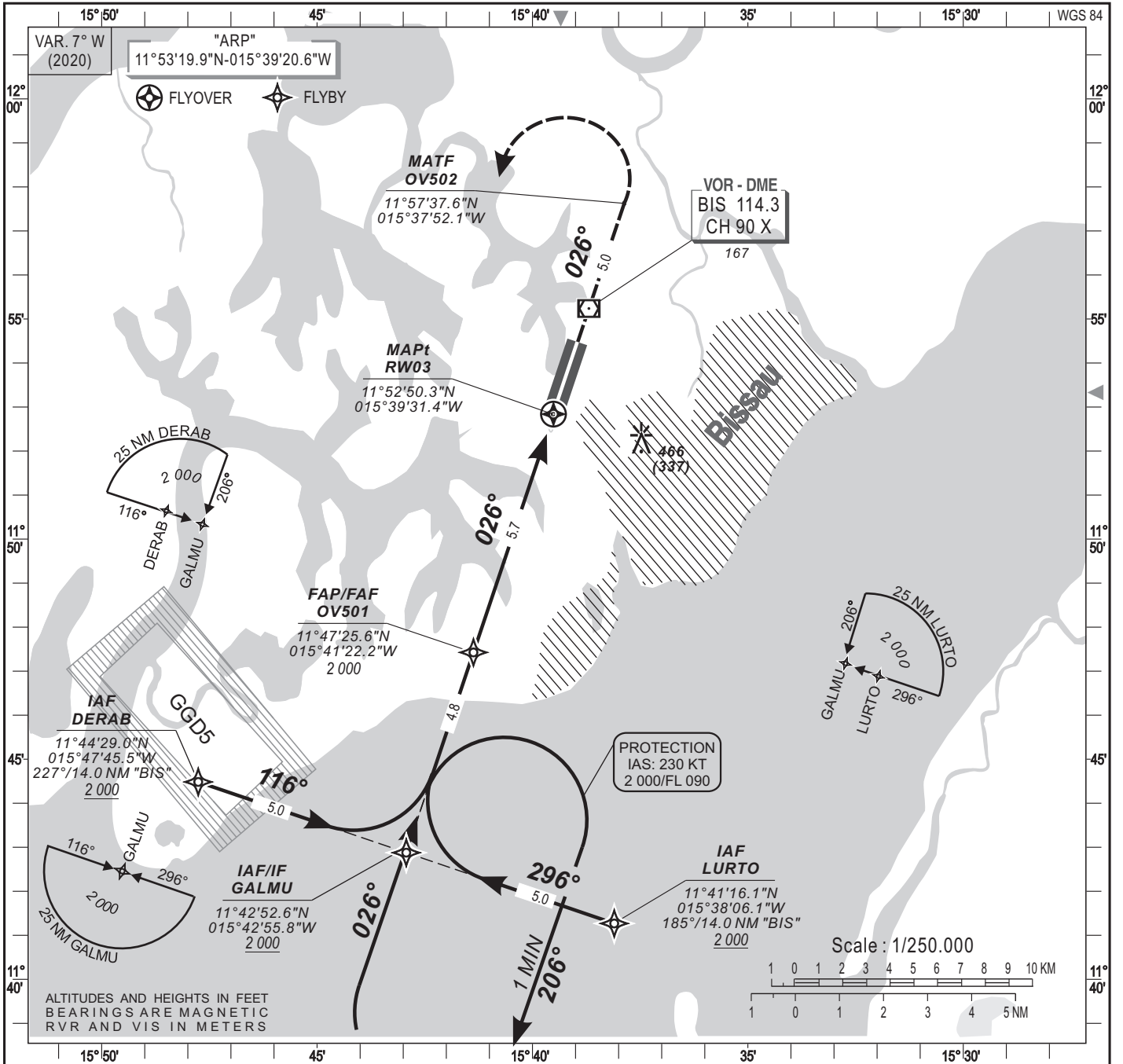
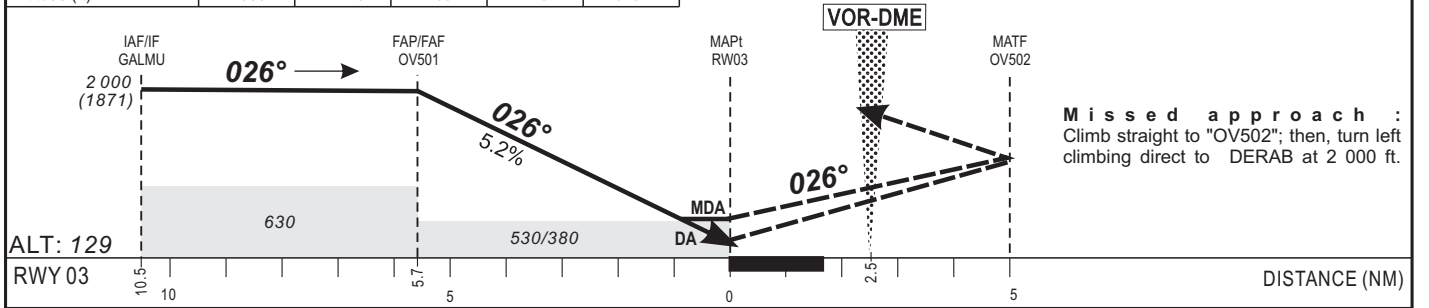


HEIGHTS RELATED TO THR RWY03 - ELEV 129 FT



Distance to RWY 03 (NM)	FAF	5	4	3	2	TRANSITION ALTITUDE: 3 000
Altitude (ft)	2 000	1770	1460	1140	820	



CAT	LNAV/VNAV			LNAV			CIRCLING (1)			RVR for take-off CAT A - B - C : 400 CAT D : 400
	DA (DH)	MDA MDH	RVR	OCA (OCH)	MDA MDH	RVR	OCA (OCH)	MDA MDH	VIS	
A	375 (246)	380 (250)	800	528 (399)	530 (400)	1200	579 (450)	580 (450)	1500	Timing: FAP/THR : 5.7 NM KT MIN SEC KT MIN SEC
B	375 (246)	380 (250)	800	528 (399)	530 (400)	1300	763 (634)	770 (640)	1600	
C	375 (246)	380 (250)	800	528 (399)	530 (400)	1400	862 (733)	860 (740)	2400	
D	375 (246)	380 (250)	1200	528 (399)	530 (400)	1600	862 (733)	860 (740)	3600	

Notes : - (1)Daytime only - OCH and MDH AAL.
- Climbing sector after take-off: between radials 247° and 154° BIS.
- Minimum temperature : 10°C.
RDH: 15 m

AMDT02/22 : Update